

# Professional Learning Opportunities



Oklahoma Education Association  
putting education first™



# HELLO

Whether you need a comprehensive program for mentor teachers or a one-hour presentation on a current topic, the OEA Teaching & Learning (T&L) Center offers a wide variety of professional learning opportunities. Our professional development offerings can be provided for small-group gatherings or full-district events. The majority are free, while more complex trainings are affordable to districts of all sizes.

For more information, please see our website at [okea.org/pd](http://okea.org/pd) or contact one of our staff members.



## OEA Teaching & Learning Team



**Kim Littrell**  
[klittrell@okea.org](mailto:klittrell@okea.org)



**Mary Dikes**  
[mdikes@okea.org](mailto:mdikes@okea.org)



**Joshua Frazier**  
[jfrazier@okea.org](mailto:jfrazier@okea.org)



**Robin Robinson**  
[robin.robinson@okea.org](mailto:robin.robinson@okea.org)

# BEYOND TRAUMA INFORMED

The OEA Trauma Cadre Initiative was created to provide strategies-rich, trauma-informed presentations to Oklahoma educators. OEA is able to offer these presentations at no cost through a grant from the NEA Great Public Schools Foundation awarded in 2021.



Cadre members had the privilege of meeting with two esteemed Oklahoma researchers to help in the curriculum development process: Dr. Barbara Sorrels, Founder and CEO of Connected Kids, in Tulsa; and Elizabeth Risch, Clinical Psychologist and Co-Director of The Child Trauma Clinical Program at the University of Oklahoma Health Sciences Center.



## Beyond Trauma Informed

*OEA Trauma Cadre*



Scan for more info

### Three Presentations Are Available:

**Elementary:** focuses on strategies for building trauma-aware classrooms

**Secondary:** focuses on strategies for building trauma-aware classrooms

**Educator:** helps educators with their management of repetitive trauma exposure

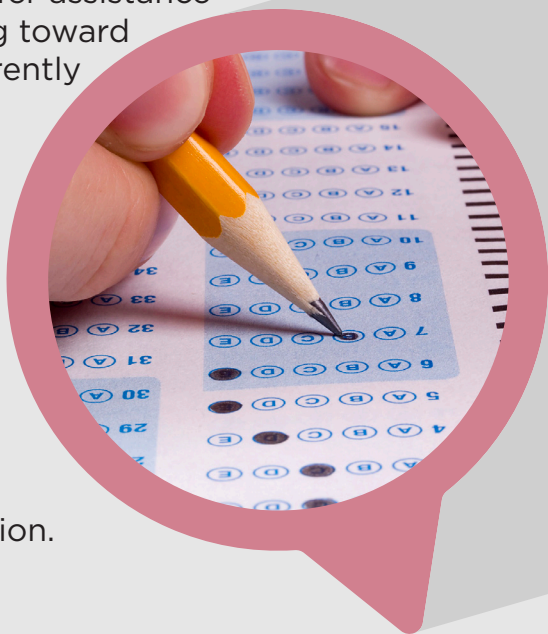
**Time Commitment:** 2-3 hours

More information about the Trauma Cadre Initiative  
[okea.org/initiatives/trauma-cadre-presentations](https://okea.org/initiatives/trauma-cadre-presentations)

# OSAT

## Targeted Support Sessions and Voucher Program

OEA is pleased to offer assistance to educators working toward certification. We currently have two programs available via a grant from the NEA Teacher Quality and Great Public Schools Centers. These **free** online sessions are designed for candidates seeking traditional, alternative, or emergency certification.



**Sessions Available:** Elementary (Reading, Math, Constructed Response), Early Childhood, Special Ed Mild/Moderate, and US/OK History/Government/Economics, plus all OSAT Constructed Response.



**OSAT Voucher Codes** – OEA is also offering two \$65 OSAT voucher codes as a membership benefit. Members needing to register for any of the OSAT certification tests can obtain a voucher code through the **website before registering** for their certification tests!

For more information or to register:  
[okea.org/for-members/osat](https://okea.org/for-members/osat)

# PRESENTATIONS

## Professional Development

Below you will find the T&L's frequently requested presentations. Please contact us to discuss your interests and needs in more detail.



### **Bullying**

---

Stop bullying by investigating the psychological, social and educational impact of bullying behaviors, including cyber-bullying.

### **The Role of Resiliency**

---

For Oklahoma students impacted by poverty and trauma, resilience is a key characteristic for success in school. Learn classroom practices to help build resiliency.



### **Classroom Management**

---

Create classroom momentum and engagement through specific routines, strategies, and classroom structures.



### **Educator Ethics: The Oklahoma Standard**

---

The Oklahoma Standards of Performance and Conduct for Teachers indicates educators are to be “guided in their conduct by their commitment to their students and their profession.” Develop the professional judgment needed to perform your duties with honor and integrity and to protect yourself from poor evaluations, administrative actions, and professional liability. Sessions are available for both certified and support staff.



More information:

[okea.org/for-members/teaching-learning](https://okea.org/for-members/teaching-learning)

# PRESENTATIONS

## Professional Development

### True Colors

A personality survey that provides insight into learning and leadership styles and helps you make the most of both student and adult group dynamics.



### Crisis Management: Evidence-Based Classroom Strategies

Learn how to respond rather than react when agitation is escalating! You can often proactively interrupt the conflict cycle with evidence-based strategies and utilize the de-escalation and recovery phases to shape future behavior and repair relationships.

### Communicating Professionally and Effectively with Parents, Students and Colleagues

How we engage with each of our audiences as educators can have significant benefits and repercussions! Learn about the ethical, professional, and practical considerations of



### Calm Amid Chaos: Career Sustaining Mindfulness

Today's educators need methods to add career sustaining practices into their hectic days. This presentation offers effective strategies that assist in dealing with the daily stressors of teaching and managing mental health amid today's challenging education environment.



More information:

[okea.org/for-members/teaching-learning](http://okea.org/for-members/teaching-learning)



# CUSTOM

## Professional Development

The OEA Teaching & Learning Center can create and customize professional learning opportunities based on the challenges and needs at your school sites and district. Please contact us to discuss your interests and needs in more detail.



**Melia Melton**

Teaching & Learning Center Assistant

[mmelton@okea.org](mailto:mmelton@okea.org)



Scan for more info

**For additional information about OEA's professional learning offerings, please contact Teaching & Learning Center Assistant Melia Melton at 800.522.8091 or [mmelton@okea.org](mailto:mmelton@okea.org).**

